

MINIMUM "d" = 10mm

DISTANCE "d" IS MEASURED FROM THE EDGE OF THE 3/8" HOLES TO THE EDGE OF THE PLATES 6V4-7, 6V4-7HD AND 6V4-8.

REFERENCE: CONSTRUCTION MANUAL PAGE 16

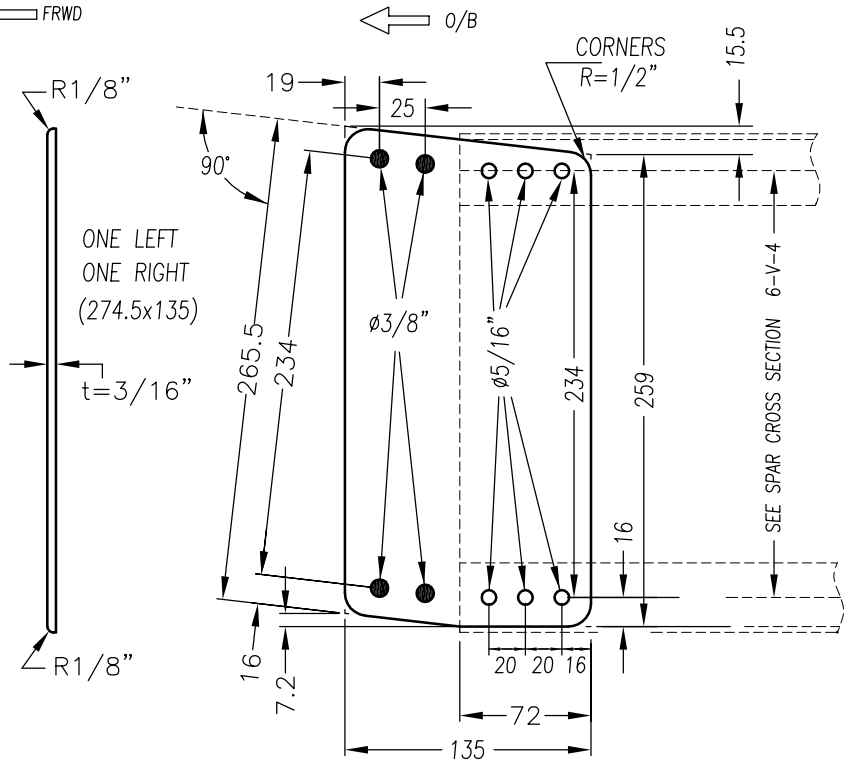
MINIMUM "e" = 8mm

EDGE OF 5/16" HOLES TO THE EDGE OF EXTRUSION AND/OR TO EDGE OF PLATE. (EXCEPT FOR THE UPPER INBOARD HOLE)

MINIMUM "a" = 5mm

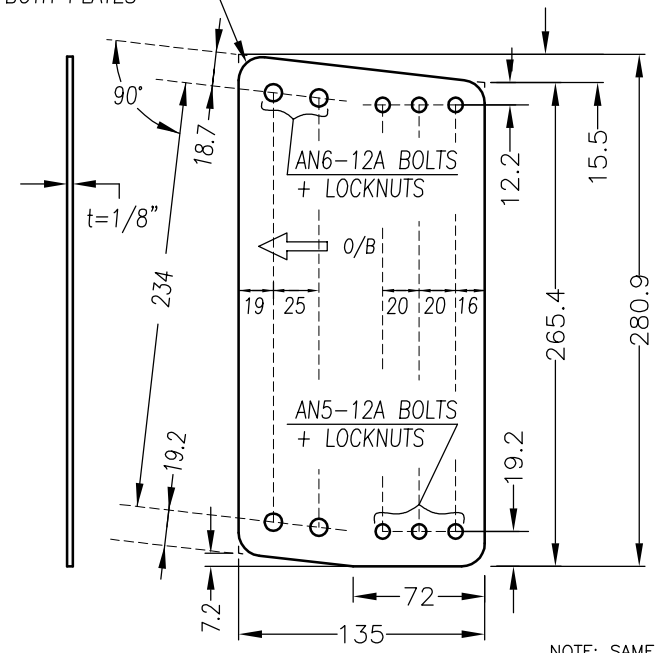
UPPER INBOARD 5/16" HOLE ONLY

FRWD



6V4-7 REAR PLATE
6061-T6, t=3/16" (1L + 1R REQ'D)

R=1/2" ALL 4 CORNERS BOTH PLATES



6V4-8 FRONT PLATE
6061-T6, t=1/8" (2 REQ'D)

NOTE: SAME LAYOUT AS 6V4-7 BUT BIGGER ON TOP AND BOTTOM BY 3.2mm REFERENCE: DRWG 6-V-4

6V4-7HD REAR PLATE
6061-T6, t=3/16" (1L + 1R REQ'D)

REPLACEMENT PLATES:
REPLACE PLATES WITH 4130N t=1/8" IF "d" AND/OR "e" IS LESS THAN THE MINIMUM ACCEPTABLE DISTANCE. CHECK TOP & BOTTOM.

ZODIAC
CH601
UL/HD/HDS

DISTANCE "d", "d" and "e" ARE THE SAME FOR THE HDS

COPYRIGHT © 2001 ZENITH AIRCRAFT CO. WWW.ZENITHAIR.COM 02/15/01